

# SHARP CLARITY FOR ALL PARTS



# HARD FACTS FOR ENHANCE

Even if nowadays motor vehicles are based on substantially fewer body shells, if fewer individual parts determine production, if entire sub-assemblies have to be ready just-in-time, then the optimisation of coding is more than just a question of identification.

Schoder coding tools are marking the identity of millions of parts! Whether they're used in the casting moulds for alloy wheels, whether in coding metal parts, such as exhaust systems and catalytic converters, or in coding engine parts, locking cylinders or many other parts. Steel stamps, steel types and Schoder press dies can



Schoder coding tools – the hardest tools for enhanced safety!

## Press dies and double press dies

For stamping sheet metal, plastics and other materials. Material: high-carbon tool steel with embossment in accordance with the customer's specifications, with milled edging if required.

## Steel stamps

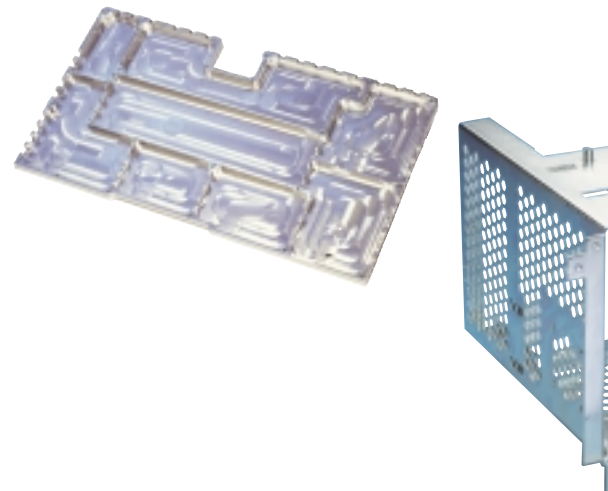
Made of extremely hard tool steel with material-specific additional hardening. Hammer head tempering conforms with DIN 7353. The clients' data files are used to produce embossments in accordance with their own specifications.

## Numbering tools

For labelling with optimally adapted embossing. Available in different versions with numbers, letters, fonts, symbols. Also as tools with automatic adjustment.

## Printing wheels

Manufactured using modern CAD technology and high-performance, high-speed eroding centres. Laser embossing ensures maximum detail and optimised engraving depth.



# D IDENTITY AND SECURITY

imprint all of your significant embossments. Reliable, precise and without compromise in detail and embossment depth. Schoder coding tools are made from extremely hard tool steel and are milled and hardened especially for your processing specifications and materials.

Everything that we, at Schoder, currently produce for the embossment and coding of metal, is also available for the coding of moulded plastic parts.



## Pipe coding

Schoder also specialises in the marking of copper and steel pipes. All diameters of pipes can be marked by the exactly-incorporated radius of the pipe that is to be embossed. Rapidly changeable segments of a specially developed rapid roller allow your marking process to be flexibly and economically configured with minimal manual steps.

## Schoder processing - quality and precision just in time!

### Milling

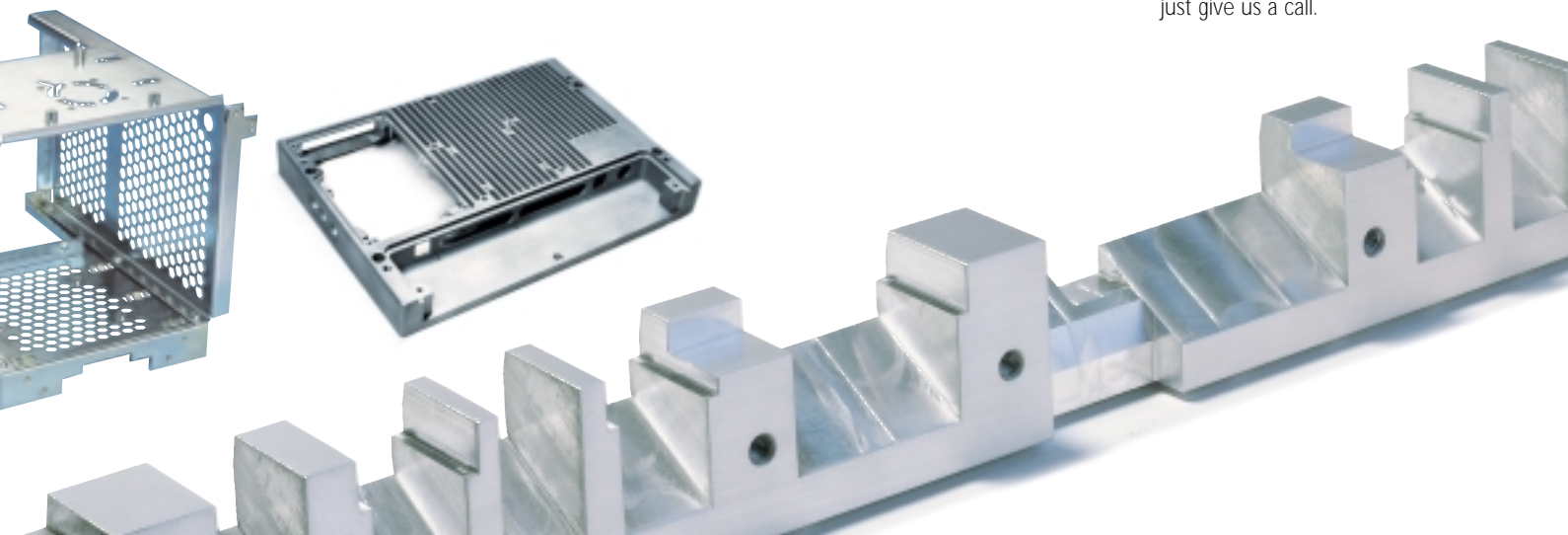
The most modern CNC processing centres for the production of complex components. Here, our strength is in our flexible production depth. In addition to large parts with dimensions of up to 3000 x 800 x 800 mm, we can also work small parts with five-axis processing from 6 sides and dimensions up to 80 mm chord size.

### Laser cutting

Our laser cutting system can provide extremely precise cuts up to a sheet size of 3000 x 1500 mm. Automatic charging with the most modern cutting technology allow the formation of complex contours with the shortest amount of stoppage time.

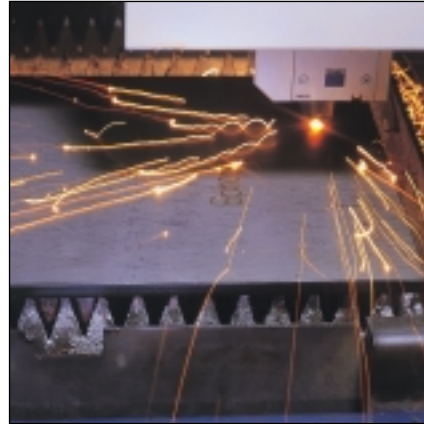
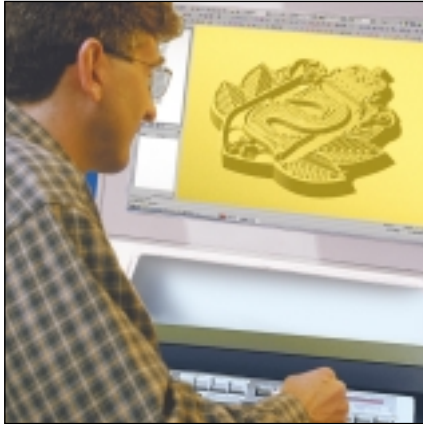
### Eroder and wire-cutter production

These are a few typical examples of production that can be extremely worthwhile even for small series runs. We'll gladly show you what we're capable of with the most modern CAD technology and powerful equipment. We'll prepare a sample tailored specially for your requirements – just give us a call.



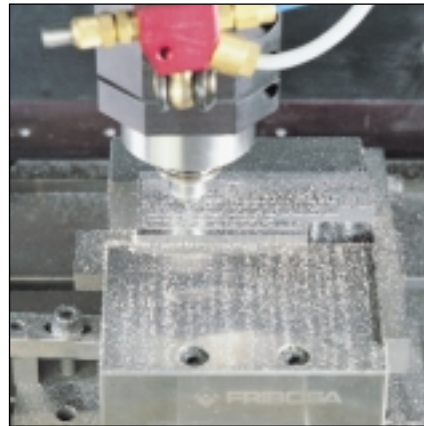
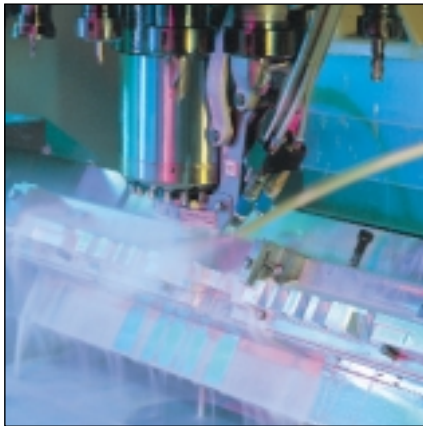
# WE ARE EXTREMELY FLEXIBLE IN MANY AREAS – WHY NOT PUT US TO THE TEST!

Processing customer data  
and programming with a  
CAD/CAM system



Cutting work pieces with  
the latest in laser technology

CNC processing centre for  
precision parts with complex  
geometries



Embossing the coding tool on  
fully-automatic CAD-controlled  
machines

Thanks to their quality and precision, Schoder products have been making a name for themselves on many markets in Germany and Europe for the last 75 years.

You will find Schoder products in mechanical engineering, the automobile industry, in tool and mould-making and in the packing industry. Schoder front panels control machines, rating plates provide important information, and front panels and 19" drawers have become an integral part of machine tool and appliance design and electronics.

As a supplier, we form and process parts for your production just-in-time.

Contact us to find out how our know-how and precision can support and benefit your production process.

Have a look at our website for more information or contact us by email, telephone or fax.

**schoder**

CNC MILLING PROCESSING  
ENGRAVING TECHNOLOGY  
FRONT PANELS  
SHEET METAL PROCESSING  
MEMBRANE KEYBOARDS

**QUALITÄTS-  
MANAGEMENT**  
Wir sind zertifiziert

Regelmäßige freiwillige  
Überwachung nach ISO 9001:2000

