

# EMBOSSMENT DURING PACKAGING



# HARD FACTS ON

Modern marketing strategies demand fast reactions to market trends and customer requirements as well as flexibility in production.

What is important are partners who guarantee world-wide dimensions even for small parts.

Schoder coding tools are making their mark on millions of packages and parts world-wide today.

In the automobile industry, in the production of copper cables and pipes or in the packing industry – Schoder coding tools, steel stamps, steel types and embossing stamps are proving their extreme ruggedness and endurance everywhere.

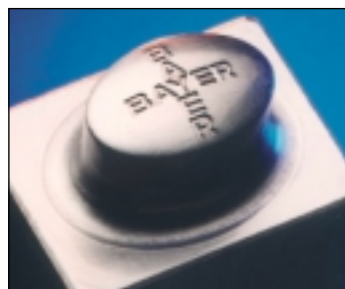


**Be it medication or foodstuffs, cardboard, PVC or metal – the information must be clean & clearly legible**



## Laser embossing

Sharpest embossing with CNC-controlled laser technology. Note the attention to detail, even with the most complicated illustrations. Production using your data files will reduce production time and costs.



## Steel stamps

Made of extremely hard tool steel with material-specific additional hardening. Hammer head tempering conforms with DIN 7353. The clients' data files are used to produce embossments in accordance with their own specifications.

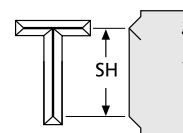
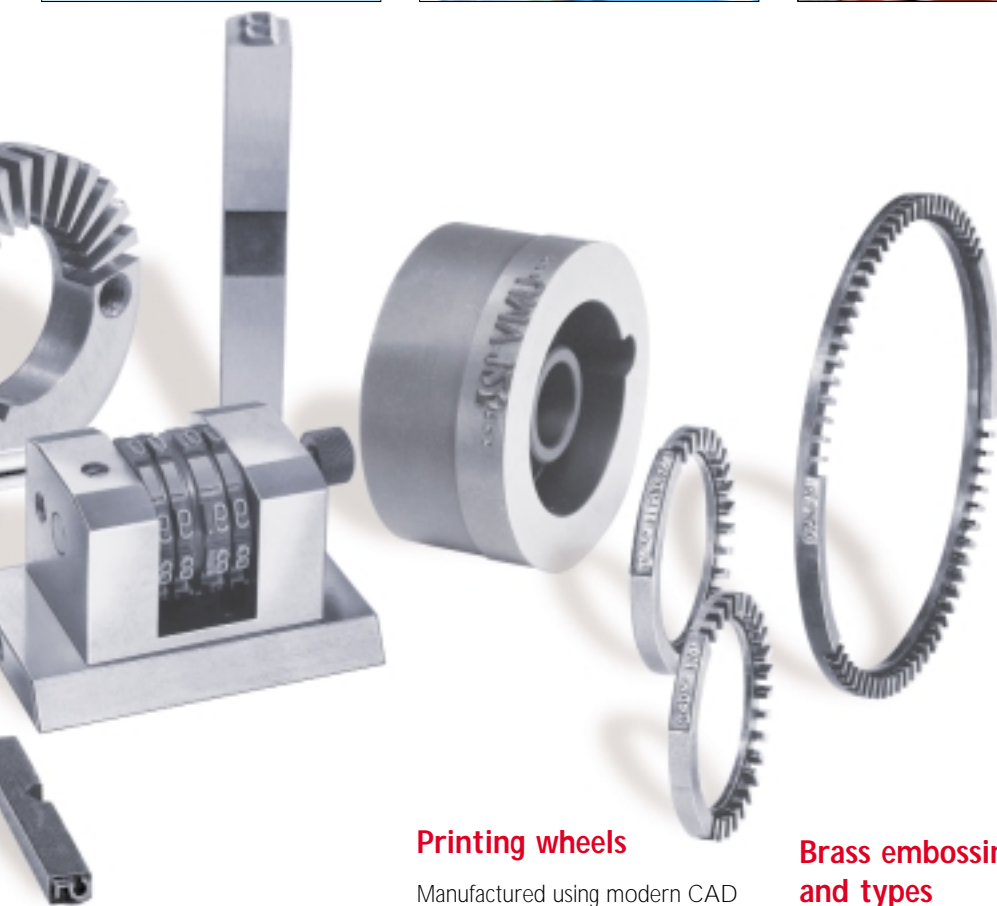
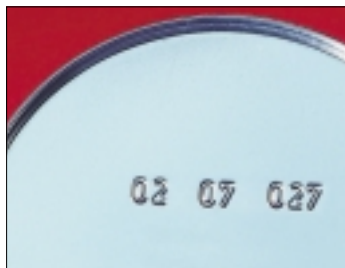
## Steel embossing types

For use in almost all labelling and packing systems. Made from alloyed tool steel with a hardness of 60 - 62 HRC or stainless steel.

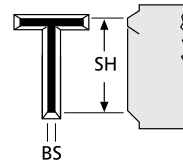
# EMBOSSMENT

The Schoder production programme includes printing wheels for cigarette production, numbering tools for package printing and brass embossing stamps for foil embossing, as well as coding tools for aluminium wheels, exhaust systems, engine parts or lock cylinders in modern automobiles.

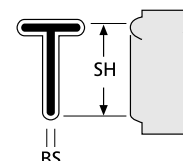
Discover the variety of available options! Production on the latest CNC-controlled high-speed processing centres, programming by CAD/CAM, computer-controlled embossing with  $\mu$ -accuracy.



sharp embossing



embossing with surface



rounded embossing

## Printing wheels

Manufactured using modern CAD technology and high-performance, high-speed eroding centres. Laser embossing ensures maximum detail and optimised embossing depth.



## Brass embossing stamps and types

Available for all common hot embossing machines. Very good head conductivity for hot embossing of foils, boxes and labels.



## Embossments

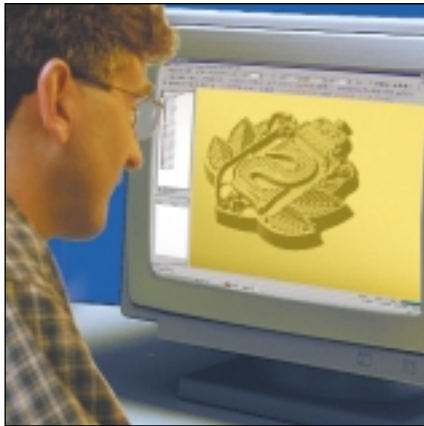
Sharp embossing (for blind embossing), embossing with surface (for hot embossing), rounded embossing (to avoid notching and breaking of material).

## Numbering tools

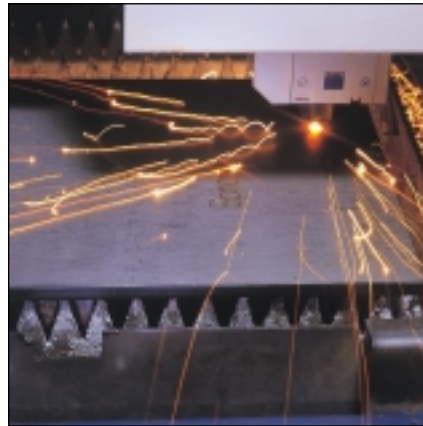
For labelling with optimally adapted embossing. Available in different versions with numbers, letters, fonts, symbols. Also as tools with automatic adjustment.

# WE ARE EXTREMELY FLEXIBLE IN MANY AREAS – WHY NOT PUT US TO THE TEST!

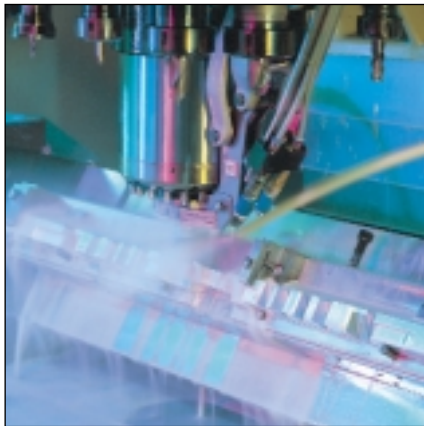
Processing customer data  
and programming with a  
CAD/CAM system



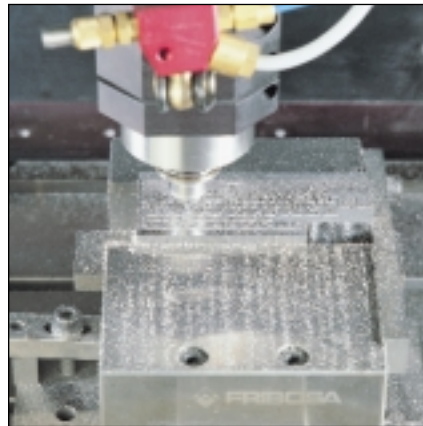
Cutting work pieces with  
the latest in laser technology



CNC processing centre for  
precision parts with complex  
geometries



Embossing the coding tool on  
fully-automatic CAD-controlled  
machines



Thanks to their quality and precision, Schoder products have been making a name for themselves on many markets in Germany and Europe for the last 75 years.

You will find Schoder products in mechanical engineering, the automobile industry, in tool and mould-making and in the packing industry. Schoder front panels control machines, rating plates provide important information, and front panels and 19" drawers have become an integral part of machine tool and appliance design and electronics.

As a supplier, we form and process parts for your production just-in-time.

Contact us to find out how our know-how and precision can support and benefit your production process.

Have a look at our website for more information or contact us by email, telephone or fax.

**schoder**

CNC-FRÄSBEARBEITUNG  
GRAVIERTECHNIK  
FRONTPLATTEN  
BLECHBEARBEITUNG  
FOLIENSTATUREN

**QUALITÄTS-  
MANAGEMENT**

Wir sind zertifiziert  
Regelmäßige freiwillige  
Überwachung nach ISO 9001:2000

